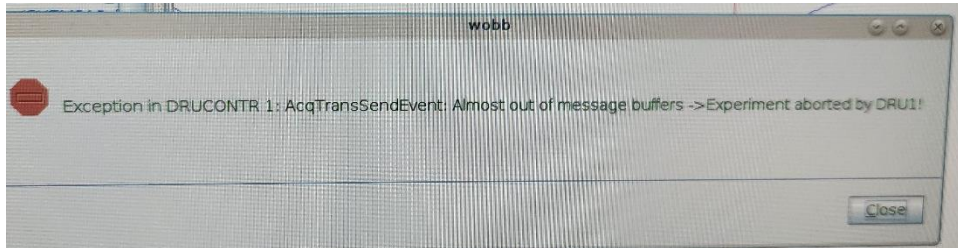


While trying to tune 1H channel

Exception in DRUContr 1: acqTransSendEvent: Almost Out of Message Buffers -> Experiment aborted by DRU1

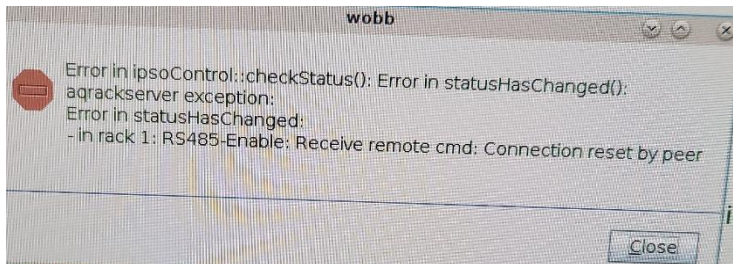


Error in ipso control :: checkStatus(): Error in statusHasChanged():

Sqrackserver exception:

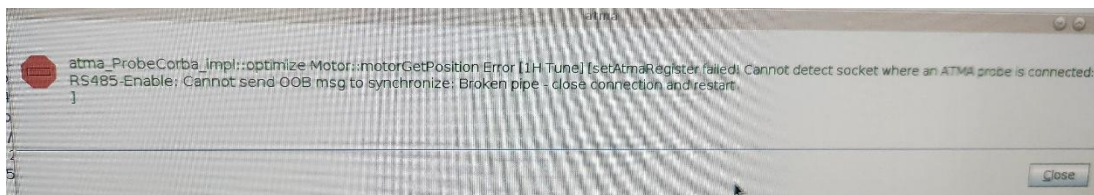
Error in statusHas Changed:

-in rack 1: RS485-Enable: Receive remote cmd: Connection Reset by peer



Atma\_ProbeCorba\_impl::optimize Motor:: motorGetPosition Error [1H tune][setAtmaRegister Failed! Cannot Detect Socket where an ATMA probe is connected:

RS485-Enable: Cannot Send OOB Msg to synchronize: Broken pipe – close connection and restart]

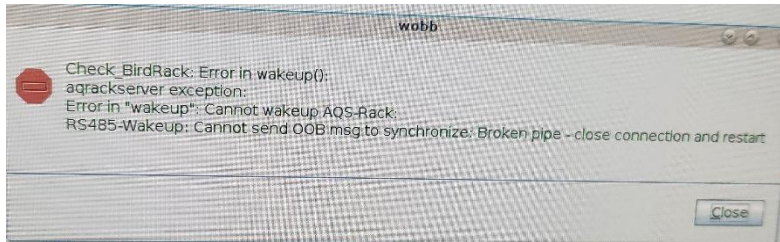


Check-BirdRack: Error in wakeup():

Aqrackserver exception:

Error in "wakeup" cannot wakeup AQS-Rack:

RS485-Wakeup: Cannot send OOB msg to synchronize: broken pipe – close connection and restart

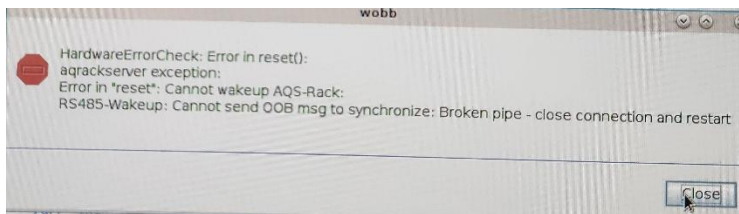


Hardware errorcheck: error in restart():

Aqrackserver exception:

Error in "reset": cannot wakeup AQS-Rack:

RS485-Wakeup: Cannot send OOB msg to synchronize: Broken Pipe – close connection and restart.

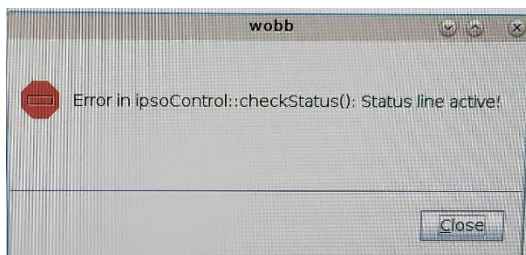


Restarted Topspin

Locked

Ran atma this message appeared

Error in ipsoControl::checkStatus():Status line active!

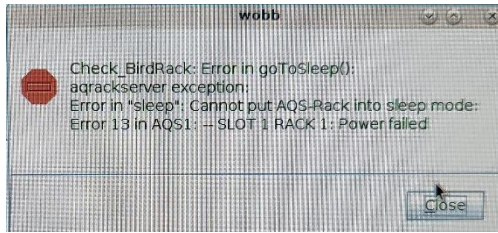


Check\_birdRack: error in goToSleep():

Aqrackserver exception:

Error in "sleep": cannot put AQS-rack into sleep mode:

Error 13 in AQS1: - slot 1 rack 1: power failed



I checked the racks and did not see any error lights. Should I just preform a full consule restart?

Carried out console restart.

Locked fine. When I tried to shim the following messages appeared

